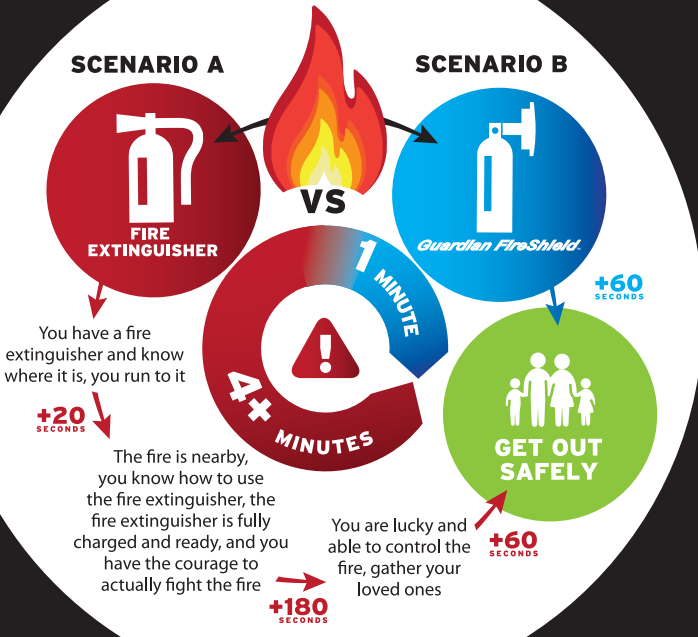


## SCENARIO A

## SCENARIO B



DESIGNED BY A  
FIRE FIGHTER  
TO SAVE LIVES.



**"Guardian Fire Shield™, a Canadian Designed, Metis Co-Invented, Aerospace Manufactured, Patented, Auto Fire Suppression Technology."**

As a Co-Inventor I am proud to be associated with the invention of Guardian Fire Shield™ [GFS]. When asked why, my answer is always the same. Most people may have a fire extinguisher in their homes, cottages, condos, places of business, etc. Most won't know how to use one. GFS provides ease of install and will auto activate at 135°F, the temperature in which you have a fire in the room. Safety First.

Get to Safety and let the Professional First Responders address the real risks of fire. Keep yourselves **SAFE** with GFS.

"Michael McManus, Co-Inventor"



**Guardian FireShield™**

Your In-Ceiling Fire Extinguisher

IT ONLY LOOKS LIKE A SMOKE DETECTOR  
- NOT SMOKE ACTIVATED!

**AUTOMATIC  
FIRE  
SAFETY**

WHEN EVERY SECOND COUNTS.

**HEAT  
ACTIVATED**



- ✓ KITCHENS
- ✓ BEDROOMS
- ✓ HALLWAYS
- ✓ GARAGE
- ✓ COTTAGE



**INSTALLATION  
EASY AS 1-2-3**

**1**

Find location  
in ceiling  
between joists

**2**

Trace 5 3/4" hole  
(template provided) and  
cut with drywall saw

**3**

Slide HAVEN  
into hole, turn 2  
locking screws



## SCENARIO A

## SCENARIO B



DESIGNED BY A  
FIRE FIGHTER  
TO SAVE LIVES.



**" Guardian Fire Shield™, a Canadian Designed, Metis Co-Invented, Aerospace Manufactured, Patented, Auto Fire Suppression Technology.**

As a Co-Inventor I am proud to be associated with the invention of Guardian Fire Shield™ [GFS]. When asked why, my answer is always the same. Most people may have a fire extinguisher in their homes, cottages, condos, places of business, etc. Most won't know how to use one. GFS provides ease of install and will auto activate at 135°F, the temperature in which you have a fire in the room. Safety First.

Get to Safety and let the Professional First Responders address the real risks of fire. Keep yourselves **SAFE** with GFS.

"Michael McManus, Co-Inventor"



**Guardian FireShield™**

Your In-Ceiling Fire Extinguisher

**1-888-809 6777**

info@guardianfireshield.com  
www.guardianfireshield.com  
Cloud Hawk Security Corp.  
999 Colonia Drive  
Ladysmith, B.C. V9G 1N9

IT ONLY LOOKS LIKE A SMOKE DETECTOR  
- NOT SMOKE ACTIVATED!

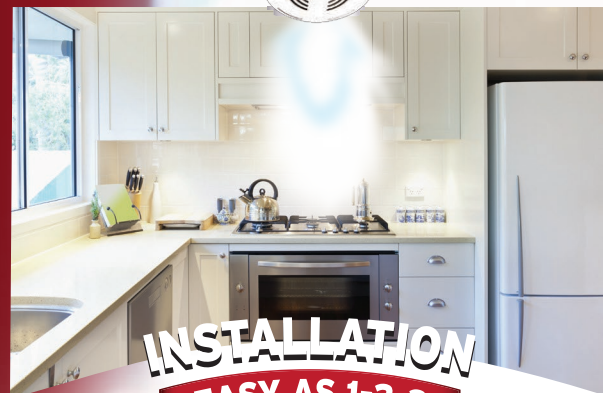
# AUTOMATIC FIRE SAFETY

WHEN EVERY SECOND COUNTS.

**HEAT  
ACTIVATED**



- ✓ KITCHENS
- ✓ BEDROOMS
- ✓ HALLWAYS
- ✓ GARAGE
- ✓ COTTAGE



**INSTALLATION  
EASY AS 1-2-3**

**1**

Find location  
in ceiling  
between joists

**2**

Trace 5 3/4" hole  
(template provided) and  
cut with drywall saw

**3**

Slide HAVEN  
into hole, turn 2  
locking screws

Length 15 5/8 inches



Depth 7 1/2 inches



**16' x 16'**  
COVERAGE

Independently tested to provide effective fire suppression in at least a 16'x16' area.



**135°F**  
HEAT ACTIVATED

The heat activated trigger means the Guardian Fire Shield™ will not discharge in the presence of smoke. It must be extremely hot (i.e. a real fire) in order for the unit to automatically discharge.



**APPROVED**  
COMPONENTS

Manufactured with certified components.



**NO WATER**  
DAMAGE

Unlike water suppression, the dry-chem agent in the Guardian Fire Shield™ does no damage whatsoever when discharged.



**ONE YEAR**  
WARRANTY

\$5 Million Certificate of Liability



**10 YEAR**  
PROTECTION

Left alone, the Guardian Fire Shield™ can protect your loved ones and your valuables for 10 years (not including battery replacement for testing purposes).



**EASY 5MIN**  
INSTALLATION

Installation couldn't be simpler. A 5 3/4 inch hole can be cut with a regular hand-held keyhole saw, and the Guardian Fire Shield™ slides easily into this hole between joists.



**NON-TOXIC**  
ENVIRONMENTALLY  
SAFE POWDER

The dry-chem agent used in the Guardian Fire Shield™ is safe when discharged, as it is essentially a form of baking soda.



**-45°C**  
OPERATES UNDER  
EXTREME COLD

Since cold temperatures don't affect performance, the Guardian Fire Shield™ is perfect for use in outbuildings of all kinds (no power is required either).



**EASY**  
CLEAN UP

The super-fine ABC dry-chem agent inside the Guardian Fire Shield™ cleans up easily with a vacuum in the event of a discharge.

\*UL & ULC Pending  
Underway with QAI  
**PENDING:**

\*Audible Alarm  
\*\*Interconnected

**Lease-Financing for**  
the Guardian Fire Shield™  
commercial / industrial  
/ recreational customers

**Unit Weight:**  
7.4 lbs including 5 lbs  
Dry-chem.

**Unit Dimensions:**  
4 3/8" diameter tank,  
15 5/8" tall,  
7 1/2" deep at faceplate.

**Packaged Weight:**  
8.4 lbs

**Packaged Dimensions:**  
8 1/16" wide x 9 1/2" deep  
x 17 1/2" tall.

**Tank Pressure:**  
175 psi.

**Activation Temperature**  
Rating:  
135°F = 57°C.

**Effective Temperature**  
Range:  
-45°C (-49°F) to 57°C  
(135°F).

**Battery:**  
(for LED low-pressure  
indication)  
9V, included.

**Single Unit Tested**  
Suppression Coverage:  
(at 8' ceiling height)  
16' x 16' room = 256  
sq.ft.

**Product Life Span:**  
10 years.

# Help Firefighters Help You!

Install the Guardian Fire Shield™  
automatic fire suppression  
safety device today!

*Your 24/7 Onsite Firefighter*

## ⚠️ PROBLEM:

There isn't time. Modern materials and furnishings mean homes burn 8x faster and produce 200x more poisonous smoke than 30 years ago. Firefighters simply cannot respond in time.

## ✅ SOLUTION:

The Guardian Fire Shield™. Fire safety hasn't changed much in 30 years, until now. The Guardian Fire Shield™ allows you and your family to get out safely, and gives firefighters the time they need to do their job.

**Guardian Fire Shield™**

Automatic Fire Suppression Safety Device